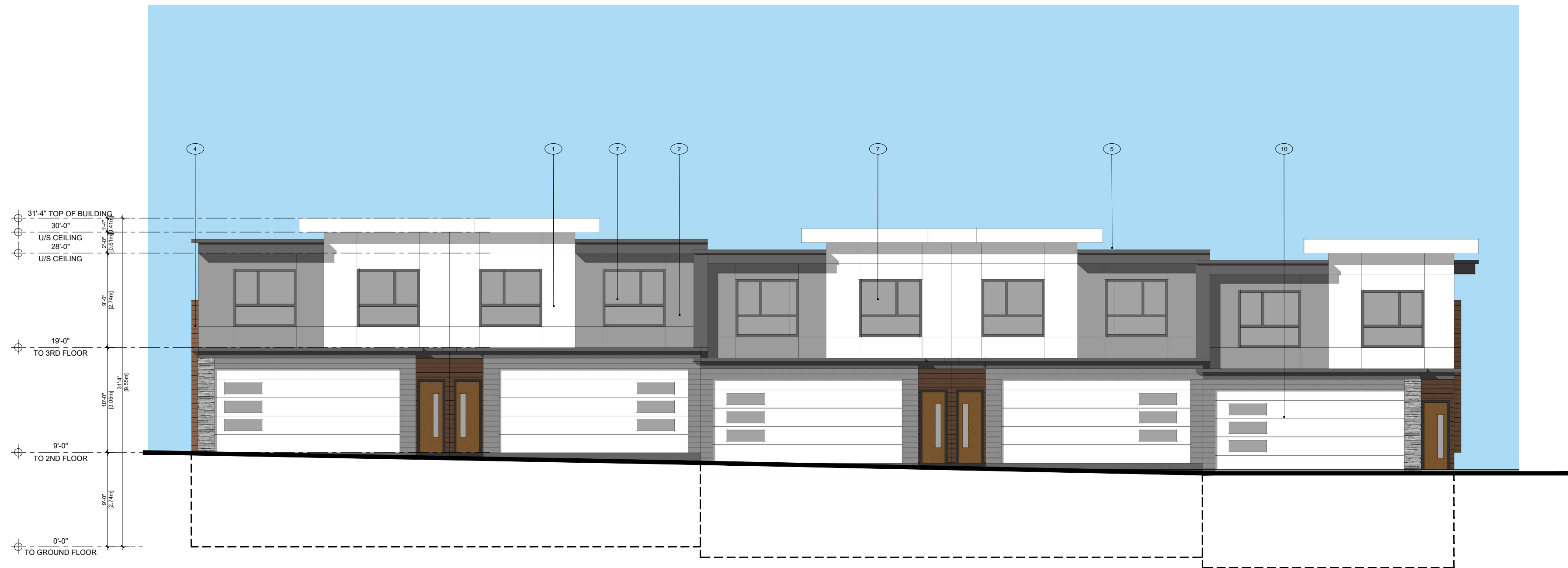




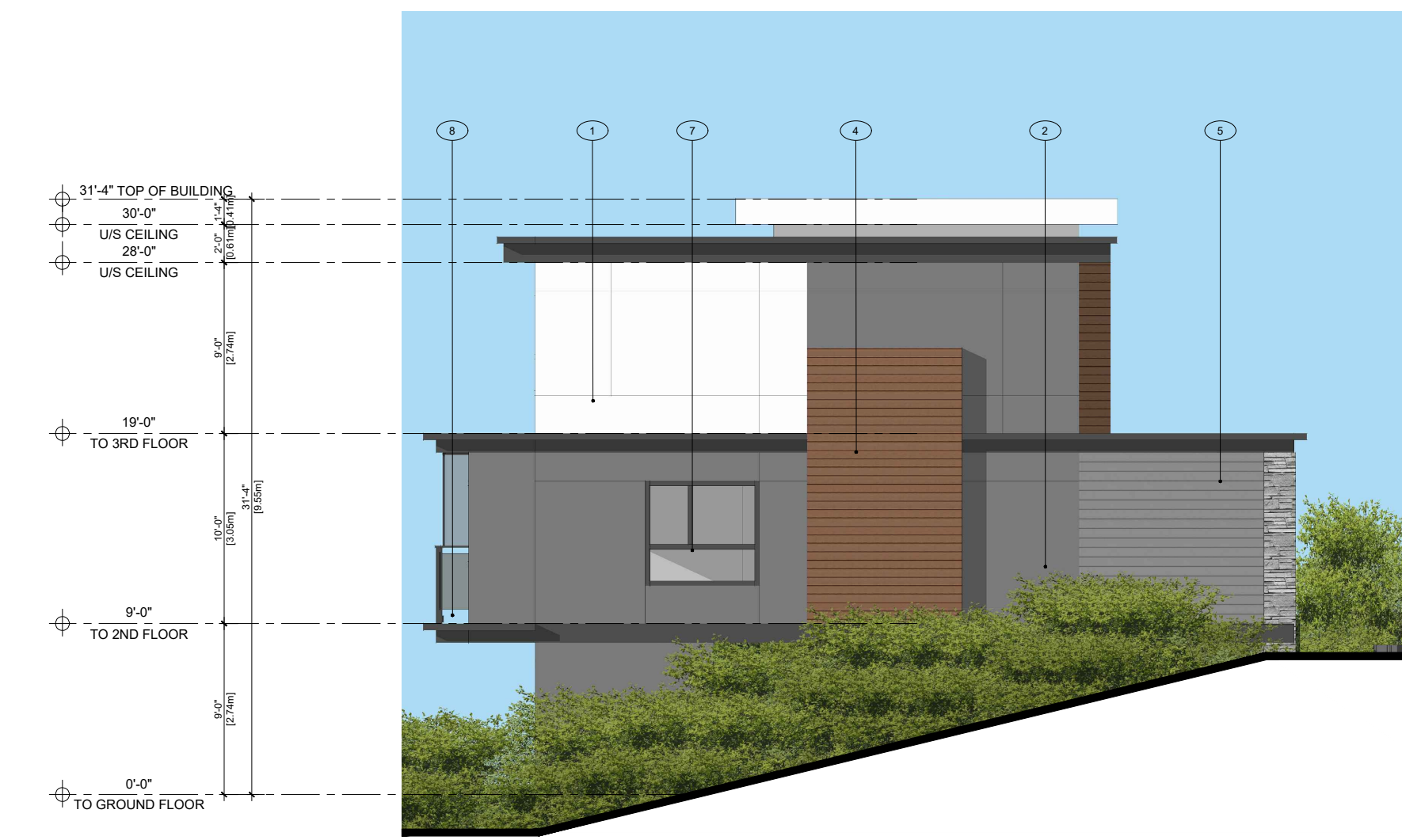
1 BUILDING 1 - NORTH  
Scale: 1/8" = 1'-0"



2 BUILDING 1 - EAST  
Scale: 1/8" = 1'-0"



3 BUILDING 1 - SOUTH  
Scale: 1/8" = 1'-0"



4 BUILDING 1 - WEST  
Scale: 1/8" = 1'-0"

EXTERIOR MATERIAL LEGEND

- |   |   |   |
|---|---|---|
| 1 HARDIE PANEL SMOOTH W/ REVIEW LINES - COLOR: LIGHT GREY | 5 METAL CLADDING - COLOR: CHARCOAL              | 9 ALUMINUM RAILING, COLOUR: DARK GREY     |
| 2 HARDIE PANEL SMOOTH W/ REVIEW LINES - COLOR: DARK GREY  | 6 SEALED DOUBLE GLAZED FRENCH DOOR              | 10 COMMERCIAL PARKING OVERHEAD ENTRY DOOR |
| 3 STONE VENEER- COLOR: COLORADO GREY                      | 7 SEALED DOUBLE GLAZED P.V.C. WINDOW            |   |
| 4 HARDIE SIDING/SOFFIT - COLOR: CEDAR                     | 8 ALUMINUM AND GLASS RAILING, COLOUR: DARK GREY |   |



1200 West 73rd Ave (Airport Square) Suite 940 Vancouver B.C. V6P 6G5  
Office: 604 558 3064 Email: info@pwaarchitecture.com www.pwaarchitecture.com



2024-04-15

ISSUES	DATE
4	
3	
2	
1 ISSUED FOR DEVELOPMENT PERMIT APPLICATION	APR 15, 2024

PROJECT NUMBER	A477
DRAWN BY	FC
CHECKED BY	PY

COPYRIGHT RESERVED. THIS PLAN AND DESIGN ARE, AND AT ALL TIMES REMAIN THE EXCLUSIVE PROPERTY OF PACIFIC WEST ARCHITECTURE INC. AND CANNOT BE USED OR REPRODUCED WITHOUT THE ARCHITECT'S WRITTEN CONSENT.

PROJECT  
**NEW TOWNHOUSE DEVELOPMENT**  
3530 HILLSIDE AVE  
NANAIMO, BC

DRAWING TITLE  
**BUILDING ELEVATIONS**  
**RECEIVED**  
**DP1343**  
**2024-APR-24**  
Current Planning

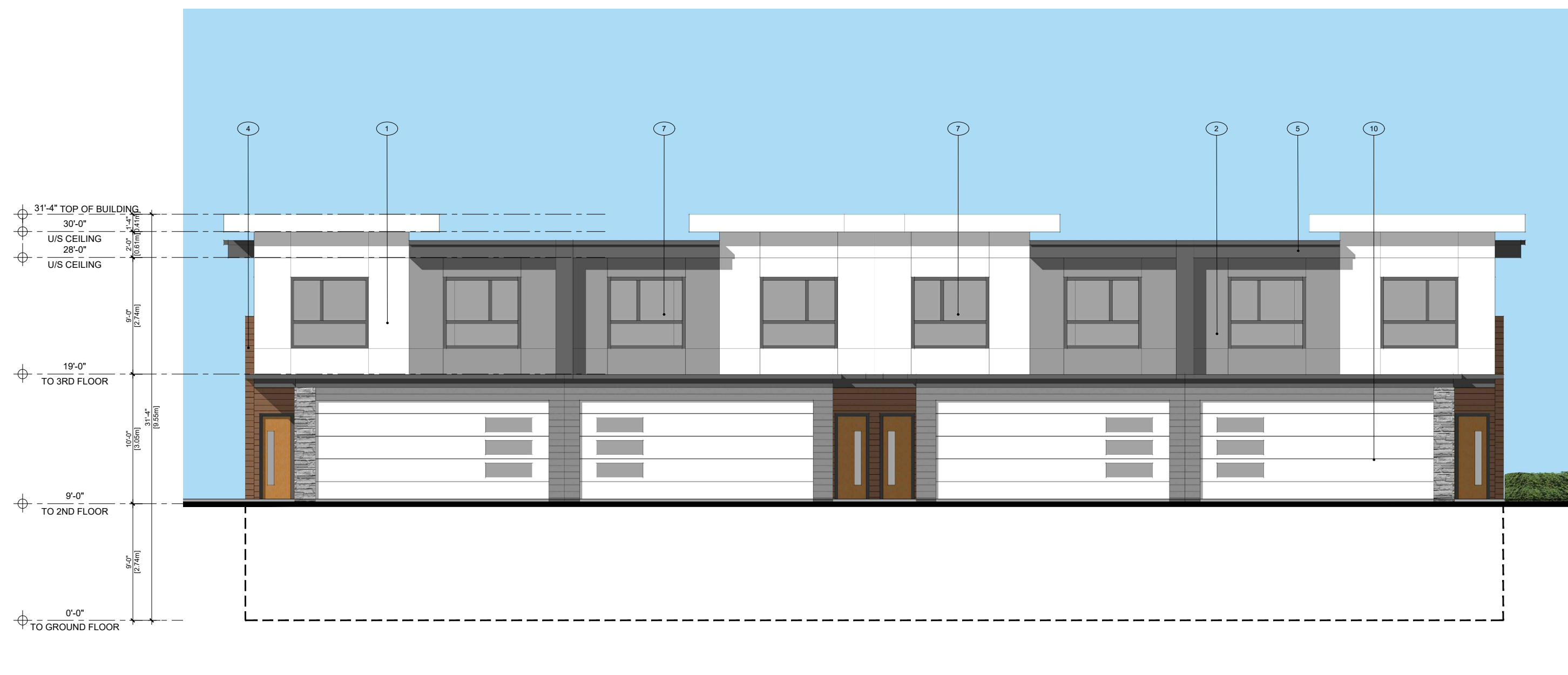
DRAWING No.

**A3.01**





1 BUILDING 2 - NORTH  
Scale: 1/8"= 1'-0"



3 BUILDING 2 - SOUTH  
Scale: 1/8"= 1'-0"



2 BUILDING 2 - EAST  
Scale: 1/8"= 1'-0"



4 BUILDING 2 - WEST  
Scale: 1/8"= 1'-0"

EXTERIOR MATERIAL LEGEND

- |   |   |   |
|---|---|---|
| 1 HARDIE PANEL SMOOTH W/ REVIEW LINES - COLOR: LIGHT GREY | 5 METAL CLADDING - COLOR: CHARCOAL              | 9 ALUMINUM RAILING, COLOUR: DARK GREY     |
| 2 HARDIE PANEL SMOOTH W/ REVIEW LINES - COLOR: DARK GREY  | 6 SEALED DOUBLE GLAZED FRENCH DOOR              | 10 COMMERCIAL PARKING OVERHEAD ENTRY DOOR |
| 3 STONE VENEER- COLOR: COLORADO GREY                      | 7 SEALED DOUBLE GLAZED P.V.C. WINDOW            |   |
| 4 HARDIE SIDING/SOFFIT - COLOR: CEDAR                     | 8 ALUMINUM AND GLASS RAILING, COLOUR: DARK GREY |   |

ISSUES	DATE
4	
3	
2	
1 ISSUED FOR DEVELOPMENT PERMIT APPLICATION	APR 15, 2024

PROJECT NUMBER	A477
DRAWN BY	FC
CHECKED BY	PY

COPYRIGHT RESERVED. THIS PLAN AND DESIGN ARE, AND AT ALL TIMES REMAIN THE EXCLUSIVE PROPERTY OF PACIFIC WEST ARCHITECTURE INC. AND CANNOT BE USED OR REPRODUCED WITHOUT THE ARCHITECT'S WRITTEN CONSENT.

PROJECT  
**NEW TOWNHOUSE DEVELOPMENT**  
3530 HILLSIDE AVE  
NANAIMO, BC

DRAWING TITLE  
**BUILDING ELEVATIONS**  
**RECEIVED DP1343**  
2024-APR-24  
Current Planning

DRAWING No.

**A3.02**





1 BUILDING 3 - NORTH  
Scale: 1/8"= 1'-0"



2 BUILDING 3 - EAST  
Scale: 1/8"= 1'-0"



3 BUILDING 3 - SOUTH  
Scale: 1/8"= 1'-0"



4 BUILDING 3 - WEST  
Scale: 1/8"= 1'-0"

EXTERIOR MATERIAL LEGEND

- |   |   |   |
|---|---|---|
| 1 HARDIE PANEL SMOOTH W/ REVIEW LINES - COLOR: LIGHT GREY | 5 METAL CLADDING - COLOR: CHARCOAL              | 9 ALUMINUM RAILING, COLOUR: DARK GREY     |
| 2 HARDIE PANEL SMOOTH W/ REVIEW LINES - COLOR: DARK GREY  | 6 SEALED DOUBLE GLAZED FRENCH DOOR              | 10 COMMERCIAL PARKING OVERHEAD ENTRY DOOR |
| 3 STONE VENEER- COLOR: COLORADO GREY                      | 7 SEALED DOUBLE GLAZED P.V.C. WINDOW            |   |
| 4 HARDIE SIDING/SOFFIT - COLOR: CEDAR                     | 8 ALUMINUM AND GLASS RAILING, COLOUR: DARK GREY |   |

ISSUES	DATE
4	
3	
2	
1 ISSUED FOR DEVELOPMENT PERMIT APPLICATION	APR 15, 2024

PROJECT NUMBER	A477
DRAWN BY	FC
CHECKED BY	PY

COPYRIGHT RESERVED. THIS PLAN AND DESIGN ARE, AND AT ALL TIMES REMAIN THE EXCLUSIVE PROPERTY OF PACIFIC WEST ARCHITECTURE INC. AND CANNOT BE USED OR REPRODUCED WITHOUT THE ARCHITECT'S WRITTEN CONSENT.

PROJECT  
**NEW TOWNHOUSE DEVELOPMENT**  
3530 HILLSIDE AVE  
NANAIMO, BC

DRAWING TITLE  
**BUILDING ELEVATIONS**  
**RECEIVED**  
**DP1343**  
**2024-APR-24**  
Current Planning

DRAWING No.

**A3.03**





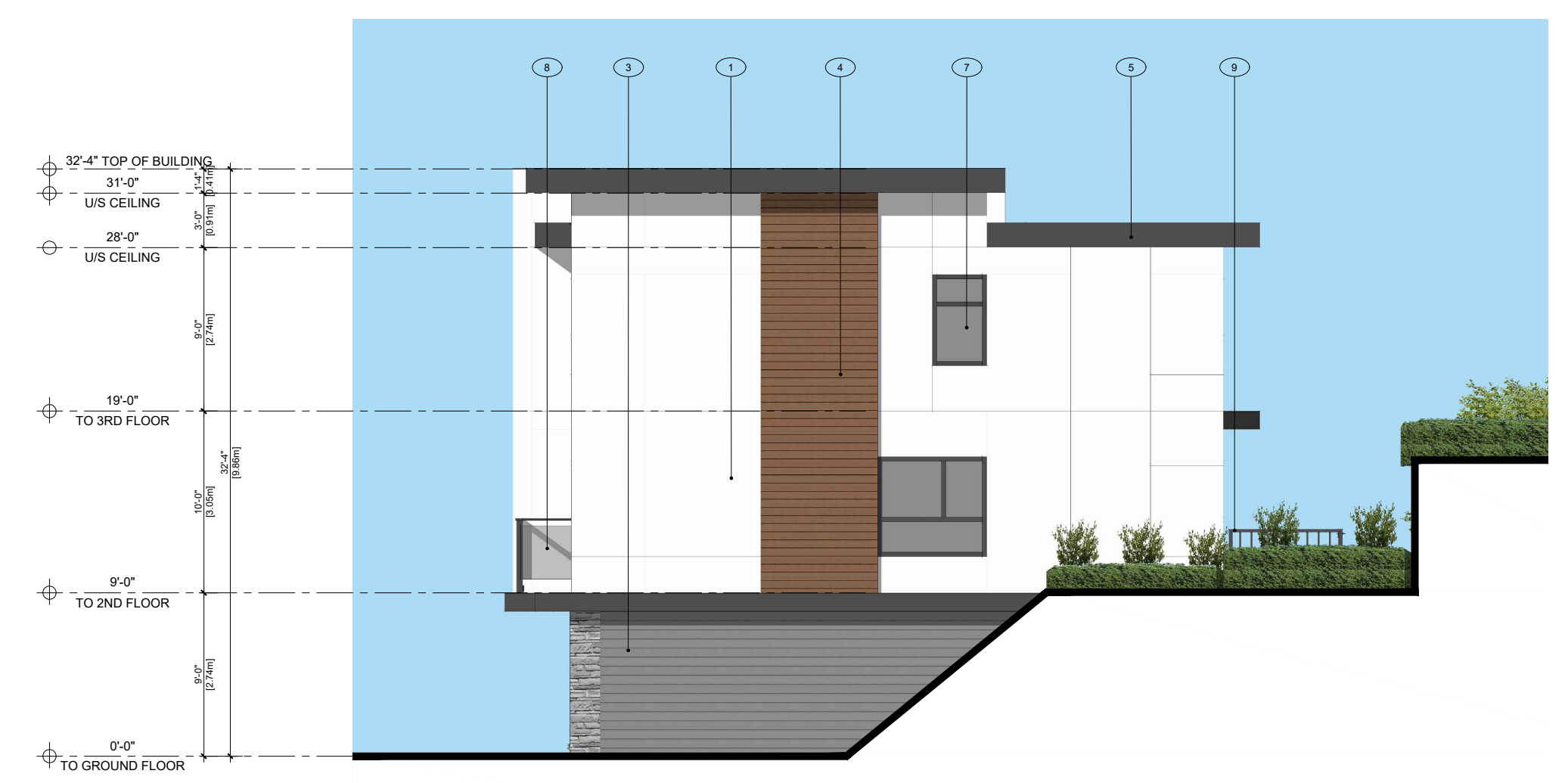
1 BUILDING 4 - NORTH  
Scale: 1/8"= 1'-0"



2 BUILDING 4 - EAST  
Scale: 1/8"= 1'-0"



3 BUILDING 4 - SOUTH  
Scale: 1/8"= 1'-0"



4 BUILDING 4 - WEST  
Scale: 1/8"= 1'-0"

EXTERIOR MATERIAL LEGEND

- |   |   |   |
|---|---|---|
| 1 HARDIE PANEL SMOOTH W/ REVIEW LINES - COLOR: LIGHT GREY | 5 METAL CLADDING - COLOR: CHARCOAL              | 9 ALUMINUM RAILING, COLOUR: DARK GREY     |
| 2 HARDIE PANEL SMOOTH W/ REVIEW LINES - COLOR: DARK GREY  | 6 SEALED DOUBLE GLAZED FRENCH DOOR              | 10 COMMERCIAL PARKING OVERHEAD ENTRY DOOR |
| 3 STONE VENEER- COLOR: COLORADO GREY                      | 7 SEALED DOUBLE GLAZED P.V.C. WINDOW            |   |
| 4 HARDIE SIDING/SOFFIT - COLOR: CEDAR                     | 8 ALUMINUM AND GLASS RAILING, COLOUR: DARK GREY |   |



1200 West 73rd Ave (Airport Square) Suite 940 Vancouver B.C. V6P 6G5  
Office: 604 558 3064 Email: info@pwaarchitecture.com www.pwaarchitecture.com



2024-04-15

ISSUES	DATE
4	
3	
2	
1 ISSUED FOR DEVELOPMENT PERMIT APPLICATION	APR 15, 2024

PROJECT NUMBER	A477
DRAWN BY	FC
CHECKED BY	PY

COPYRIGHT RESERVED. THIS PLAN AND DESIGN ARE, AND AT ALL TIMES REMAIN THE EXCLUSIVE PROPERTY OF PACIFIC WEST ARCHITECTURE INC. AND CANNOT BE USED OR REPRODUCED WITHOUT THE ARCHITECT'S WRITTEN CONSENT.

PROJECT  
**NEW TOWNHOUSE DEVELOPMENT**  
3530 HILLSIDE AVE  
NANAIMO, BC

DRAWING TITLE  
**BUILDING ELEVATIONS**  
RECEIVED  
DP1343  
2024-APR-24  
Current Planning

DRAWING No.

**A3.04**





1 BUILDING 5 - NORTH  
Scale: 1/8" = 1'-0"



2 BUILDING 5 - EAST  
Scale: 1/8" = 1'-0"



3 BUILDING 5 - SOUTH  
Scale: 1/8" = 1'-0"

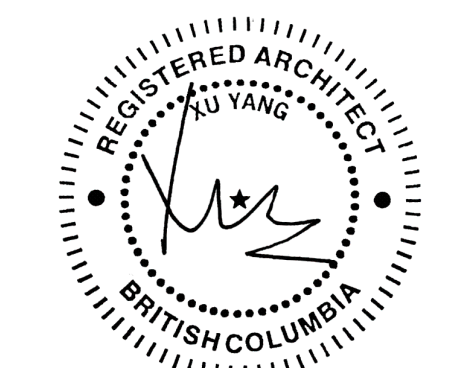


4 BUILDING 5 - WEST  
Scale: 1/8" = 1'-0"

EXTERIOR MATERIAL LEGEND					
1	HARDIE PANEL SMOOTH W/ REVIEW LINES - COLOR: LIGHT GREY	5	METAL CLADDING - COLOR: CHARCOAL	9	ALUMINUM RAILING, COLOUR: DARK GREY
2	HARDIE PANEL SMOOTH W/ REVIEW LINES - COLOR: DARK GREY	6	SEALED DOUBLE GLAZED FRENCH DOOR	10	COMMERCIAL PARKING OVERHEAD ENTRY DOOR
3	STONE VENEER- COLOR: COLORADO GREY	7	SEALED DOUBLE GLAZED P.V.C. WINDOW		
4	HARDIE SIDING/SOFFIT - COLOR: CEDAR	8	ALUMINUM AND GLASS RAILING, COLOUR: DARK GREY		



1200 West 73rd Ave (Airport Square) Suite 940 Vancouver B.C. V6P 6G5  
Office: 604 558 3064 Email: info@pwaarchitecture.com www.pwaarchitecture.com



ISSUES	DATE
4	
3	
2	
1	ISSUED FOR DEVELOPMENT PERMIT APPLICATION APR 15, 2024

PROJECT NUMBER	A477
DRAWN BY	FC
CHECKED BY	PY

COPYRIGHT RESERVED. THIS PLAN AND DESIGN ARE, AND AT ALL TIMES REMAIN THE EXCLUSIVE PROPERTY OF PACIFIC WEST ARCHITECTURE INC. AND CANNOT BE USED OR REPRODUCED WITHOUT THE ARCHITECT'S WRITTEN CONSENT.

PROJECT  
**NEW TOWNHOUSE DEVELOPMENT**  
3530 HILLSIDE AVE  
NANAIMO, BC

DRAWING TITLE  
**BUILDING ELEVATIONS**  
**RECEIVED DP1343**  
**2024-APR-24**  
Current Planning

DRAWING No.  
**A3.05**





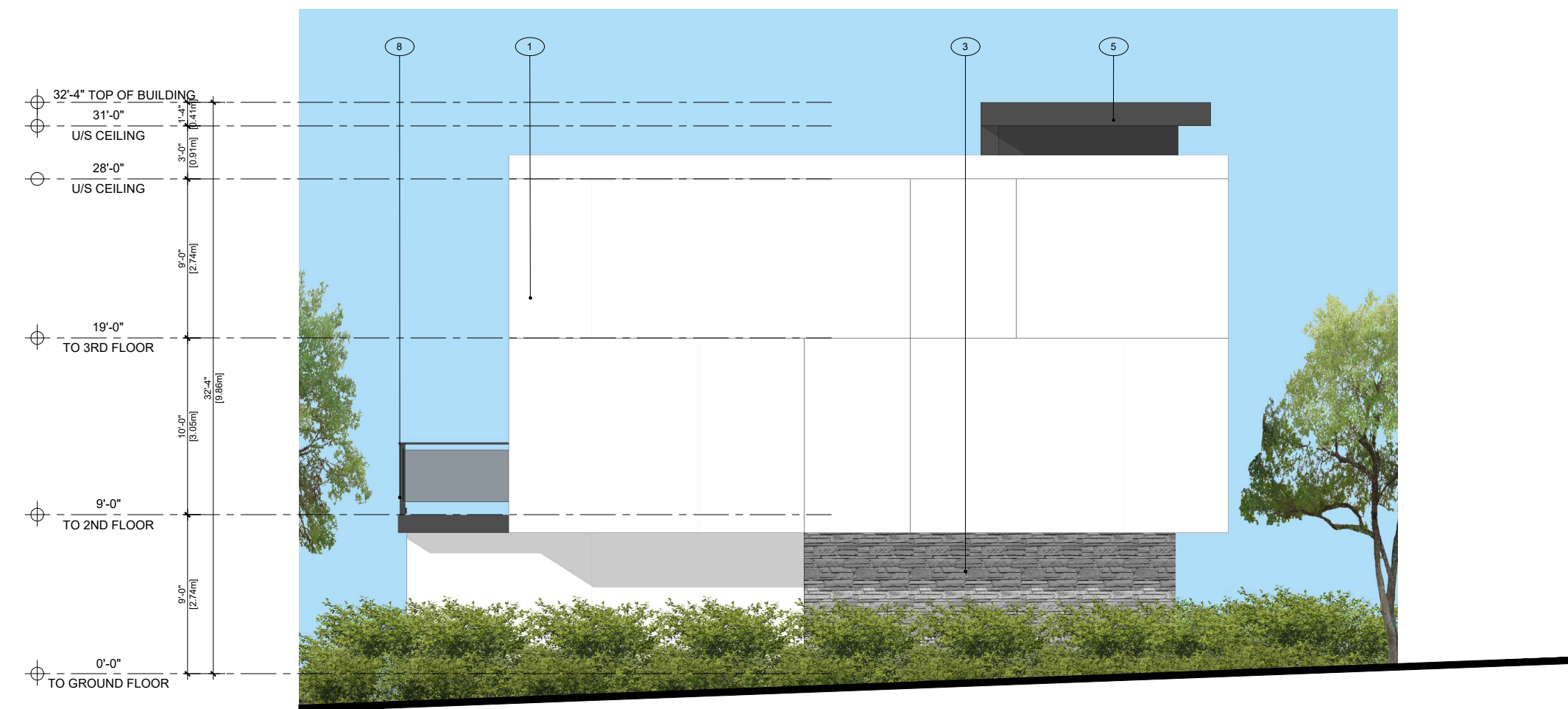
1 BUILDING 6 - NORTH  
Scale: 1/8"= 1'-0"



2 BUILDING 6 - EAST  
Scale: 1/8"= 1'-0"



3 BUILDING 6 - SOUTH  
Scale: 1/8"= 1'-0"



4 BUILDING 6 - WEST  
Scale: 1/8"= 1'-0"

EXTERIOR MATERIAL LEGEND

- |   |   |   |   |    |  |
|---|---|---|---|----|--|
| 1 | HARDIE PANEL SMOOTH W/ REVIEW LINES - COLOR: LIGHT GREY | 5 | METAL CLADDING - COLOR: CHARCOAL              | 9  | ALUMINUM RAILING, COLOUR: DARK GREY    |
| 2 | HARDIE PANEL SMOOTH W/ REVIEW LINES - COLOR: DARK GREY  | 6 | SEALED DOUBLE GLAZED FRENCH DOOR              | 10 | COMMERCIAL PARKING OVERHEAD ENTRY DOOR |
| 3 | STONE VENEER- COLOR: COLORADO GREY                      | 7 | SEALED DOUBLE GLAZED P.V.C. WINDOW            |    |  |
| 4 | HARDIE SIDING/SOFFIT - COLOR: CEDAR                     | 8 | ALUMINUM AND GLASS RAILING, COLOUR: DARK GREY |    |  |



1200 West 73rd Ave (Airport Square) Office: 604 558 3064  
Suite 940 Email: info@pwaarchitecture.com  
Vancouver B.C. V6P 6G5 www.pwaarchitecture.com



2024-04-15

ISSUES	DATE
4	
3	
2	
1	ISSUED FOR DEVELOPMENT PERMIT APPLICATION APR 15, 2024

PROJECT NUMBER	A477
DRAWN BY	FC
CHECKED BY	PY

COPYRIGHT RESERVED. THIS PLAN AND DESIGN ARE, AND AT ALL TIMES REMAIN THE EXCLUSIVE PROPERTY OF PACIFIC WEST ARCHITECTURE INC. AND CANNOT BE USED OR REPRODUCED WITHOUT THE ARCHITECT'S WRITTEN CONSENT.

PROJECT <b>NEW TOWNHOUSE DEVELOPMENT</b> 3530 HILLSIDE AVE NANAIMO, BC	<b>RECEIVED</b> <b>DP1343</b> <b>2024-APR-24</b> <i>Current Planning</i>	DRAWING No.
DRAWING TITLE <b>BUILDING ELEVATIONS</b>		<b>A3.06</b>